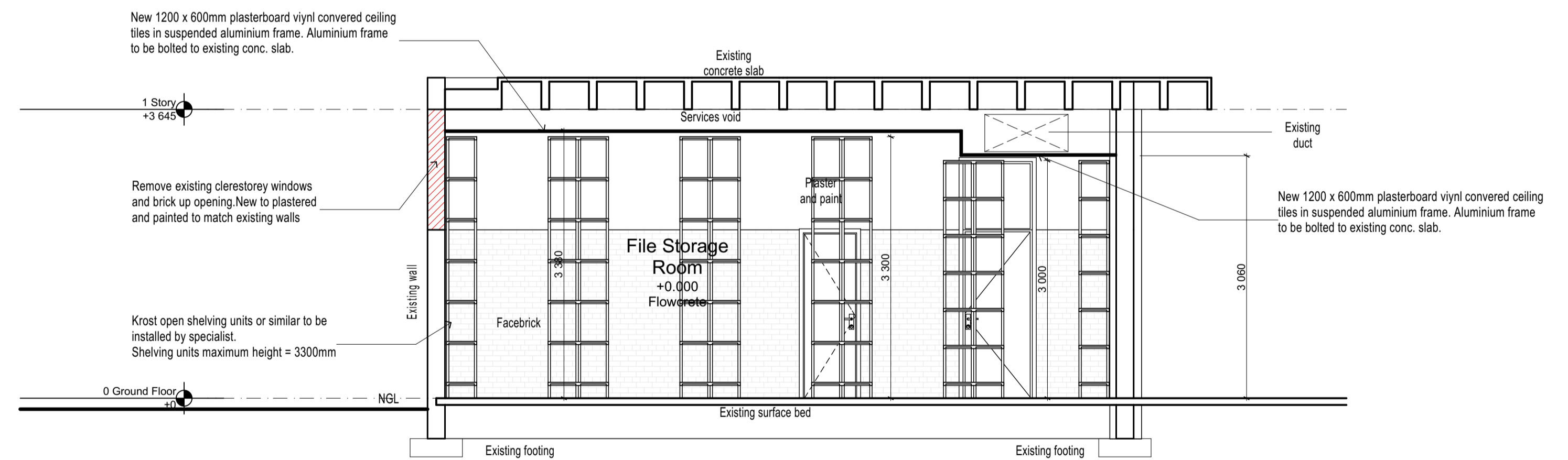


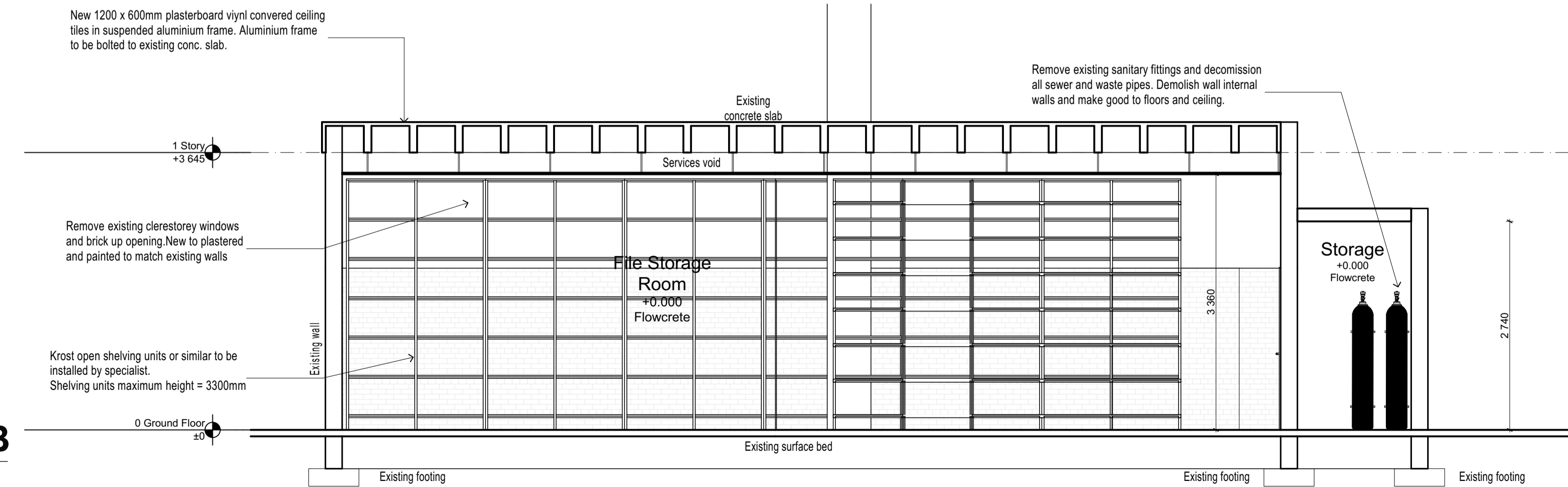
Floor Plan

Scale 1:50



Section A-A

Scale 1:50



Section B-B

Scale 1:50

NORTH :	NOTES DRAWINGS ARE NOT TO BE SCALED. DIMENSIONS TO BE CHECKED. INFORMATION RELATING TO SITE CONDITIONS TO BE ISSUED & DISCREPANCIES TO BE REPORTED TO THE ARCHITECT BY THE USER WITHOUT DELAY AND FROM TO DATE OF WORK. ALL INFORMATION CONTAINED IN THIS DRAWING IS PROJECT SPECIFIC. COPYRIGHT ARCHIBEAM DESIGN LAB. NO AMENDMENTS SHALL BE TO THIS DRAWING WITHOUT THE KNOWLEDGE OF THIS ARCHITECT AND WITHOUT THE REFERENCE TO THIS ARCHITECT.
----------------	---

SCHEDULE A: MEANS BY WHICH REGULATION A24 IS TO BE SATISFIED	
Occupancy / Building classification:	The dimensions of any room or space are in accordance with the detailed requirements of SANS 10400-C.
DIMENSIONS:	A change in level, the design of ramps and driveways, or access to swimming pools and swimming baths is in accordance with the detailed requirements of SANS 10400-C.
PUBLIC SAFETY:	The provision of sanitary facilities is in accordance with the detailed requirements of SANS 10400-F.
SITE OPERATIONS:	The excavation relating to a building is less than 3.0m deep and is in accordance with the detailed requirements of SANS 10400-G. It is the subject of a rational design or a rational assessment (or both).
EXCAVATIONS:	A geotechnical investigation in accordance with the rules to be carried out and is available for use. The foundations for the building are in accordance with SANS 10400 - the detailed requirements of SANS 10400 - H.
FOUNDATIONS:	Floors in any laundry, kitchen, shower room, bathroom or room containing a toilet pan or urinal are in accordance with the detailed requirements of SANS 10400-I. Suspended floors are in accordance with the requirements of SANS 10400-B and SANS 10400-T. The requirements of SANS 10400-C are in accordance with the detailed requirements of SANS 10400-L. Slabs supported on the ground are in accordance with SANS 10400-B, SANS 10400-H and the detailed requirements of SANS 10400-L. A competent person (civil engineering) is to be appointed in respect of the slabs or fills.
FLOORS:	The structural strength and stability of a wall is in accordance with SANS 10400-B and SANS 10400-T. The detailed requirements of SANS 10400-K. The roof framing is in accordance with SANS 10400-L. The water penetration through a wall is in accordance with the detailed requirements of SANS 10400-K.
WALLS:	Roof coverings and waterproofing systems are in accordance with the detailed requirements of SANS 10400-L. First floors or related gables are in accordance with the detailed requirements of SANS 10400-C. The subject of a rational design or rational assessment (or both) the roof assembly and any ceiling assembly, in addition to complying with the requirements of SANS 10400-C, are in accordance with the detailed requirements of SANS 10400-L and the roof assembly with the requirements of SANS 10400-K. The requirements of SANS 10400-B and SANS 10400-L are in accordance with SANS 10400-B and SANS 10400-L. Gutters and downpipes, if any, are sized in accordance with the requirements of SANS 10400-B and SANS 10400-L. The requirements of SANS 10400-L, SANS 10400-K and SANS 10400-T are in accordance with the detailed requirements of SANS 10400-L, SANS 10400-T.
STARWAYS:	Are in accordance with SANS 10400-B and SANS 10400-T. The detailed requirements of SANS 10400-M. Walls, covers, railings or balustrades to such stairways are in accordance with the requirements of SANS 10400-B and SANS 10400-T. SANS 10400-K and SANS 10400-T.
GLAZING:	The type and fixing of glazing is in accordance with SANS 10400-B. The detailed requirements of SANS 10400-L. The selection of the glazing is in accordance with the detailed requirements of SANS 10400-L.
LIGHTING & VENTILATION:	The lighting in a habitable room, bathroom, shower room and room containing a toilet pan complies with the requirements of SANS 10400-T and the detailed requirements of SANS 10400-Q. The ventilation is in accordance with the requirements of SANS 10400-T and is in accordance with the detailed requirements of SANS 10400-Q.
DRAINAGE:	The design of the drainage system is in accordance with the detailed requirements of SANS 10400-P. It is the subject of a rational design or rational assessment (or both).
NON WATERBORNE:	Is in accordance with the detailed requirements of SANS 10400-Q. It is the subject of a rational design or rational assessment (or both). The design of the drainage system is in accordance with the requirements of SANS 10400-Q. The design of the drainage system is in accordance with the requirements of SANS 10400-Q. The design of the drainage system is in accordance with the requirements of SANS 10400-Q. The design of the drainage system is in accordance with the requirements of SANS 10400-Q.
STORM WATER:	The means for the control and disposal of stormwater is in accordance with the requirements of SANS 10400-R. The design of the drainage system is in accordance with the requirements of SANS 10400-Q. The design of the drainage system is in accordance with the requirements of SANS 10400-Q. The design of the drainage system is in accordance with the requirements of SANS 10400-Q. The design of the drainage system is in accordance with the requirements of SANS 10400-Q.
DISPOSAL:	The means for providing facilities for persons with disabilities is in accordance with the detailed requirements of SANS 10400-S. The subject of a rational design.
PERSONS WITH DISABILITIES:	The fire protection measures provided are in accordance with the detailed requirements of SANS 10400-T. The subject of a rational design or rational assessment.
FIRE PROTECTION:	The provision of space heating is in accordance with the detailed requirements of SANS 10400-V.
SPACE HEATING:	The fire installations comply with the detailed requirements of SANS 10400-W. The supply of water is in accordance with the detailed requirements of SANS 10400-W. The subject of a rational design.
FIRE INSTALLATION:	ENERGY EFFICIENCY The building is so designed that: Orientation and shading are in accordance with the requirements of SANS 204. External walls are in accordance with the detailed requirements of SANS 10400-XA. Fenestration is in accordance with SANS 10400-XA. Roof assembly construction is in accordance with SANS 10400-XA. Floors with in-slab heating is in accordance with SANS 10400-XA. Services that use energy or control the use of energy is in accordance with SANS 204. Hot water systems is in accordance with SANS 10400-XA. A competent person certifies that fenestration is in accordance with SANS 204. or A competent person certifies that the building has a theoretical annual energy or A competent person certifies that the building has theoretical annual energy consumption and demand less than or equal to a reference building that complies with the requirements of SANS 10400-XA.
IN BUILDINGS:	

REVISIONS	
REV:	DESCRIPTION:
0	31/07/2021 FOR CLIENT

19 Fredman Drive, Sandton 2196
PO Box 784055, Sandton 2146, South Africa
Tel: +27 11 269 3000
Fax: +27 11 269 3116
www.idc.co.za

2 Aurisole Avenue Northriding 2162
Tel: +27 67 060 7782
E-mail: info@marshagah.co.za
Principal Architect: Taurai Chinoruma
SACAP Reg Number: 24748561

PROJECT :
NEW DOCUMENT STOREROOM ON GROUND FLOOR AT 19 FREDMAN DRIVE.

ERF NUMBER:
19 FREDMAN DRIVE, SANDTON

DRAWINGS :
FLOOR PLAN SECTION A-A SECTION B-B

SCALE : AS SHOWN	MEASUREMENT : MM	DATE : 31 JUL. 2021	ISSUED FOR : CLIENT
DRAWN BY : T. CHINORUMA	CHECKED BY : T. CHINORUMA	CLIENT SIGNATURE :	
PROJECT NUMBER : AP/2021-016	DRAWING NUMBER : 001		REVISION NUMBER : 3
			PAPER SIZE : A-1